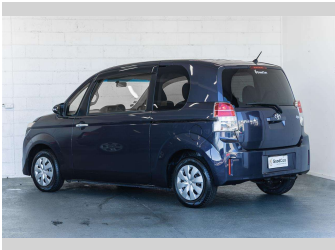
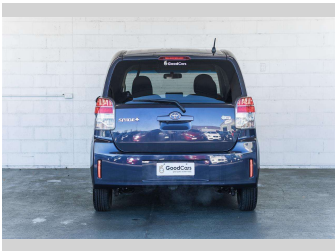
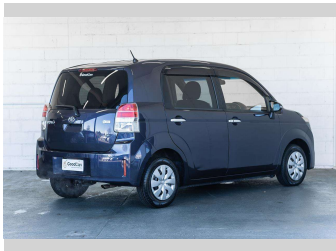


2012 Toyota SPADE X



Purchase Price

\$8,980

Includes GST

Excludes on-road costs of \$399

Indicative repayments

\$45.25 per week*

Based on a 60 month term & 20% deposit.

Total repayments (260) = \$13,639.56

Gain peace of mind with Mechanical Breakdown Insurance. Ask us how.

Top features

» Auto Stop System

» Bluetooth

» Cam Chain

» Climate Control Air Co...

» Digital Display

» Electric Sliding Door

» Electric Windows

» Electronic Stability C...

» HID Lights

» ISOFIX Child Seat Anch...

» Keyless Engine Start

» Power Side Door

» Reversing Camera

» Security System

» Side Mirror Indicators

» Smart Key

» SRS Airbags

Body Style

5 door, Hatchback

Odometer

36,597 km

Engine

1300 cc

Fuel Type

Petrol

Transmission

Auto

Wheels

-

VIN

7AT0H662X23003219

Interior

-

Safety

5 star

safety rating

Based on 2023 VSRR rating

Reg No.

-

Ext Colour

PURPLE

History

-

Seats

5 seats

CO2 Emissions

★★★★★☆☆

139 grams/km

Energy Economy

★★★★☆☆☆☆

Annual fuel cost of \$2,350

6L per 100km

Cost per year is an estimate based on petrol price of \$2.80 per litre and an average distance of 14000 km. Emissions and Energy Economy figures standardised to 3P WLTP.

Stock ID: 6352

Good Cars -
Blenheim Rd

Phone 0800 421 611 | Email sales.riccarton@goodcars.co.nz
189 Blenheim Road, Riccarton, Christchurch 8041, New Zealand
www.goodcars.co.nz

B

★★★★★

4.59 | 391 reviews

* Good Cars - Blenheim Rd is not a lender nor a financial adviser. Any amounts displayed should not be seen as an offer of finance or taken as financial advice. The interest rate, fees and loan term used in this calculation may not actually represent those available from lenders. Actual interest rates, fees and loan terms will vary per lender and are typically based on an assessment of your credit risk and responsible lending criteria. Any repayment amounts displayed are indicative only and have been calculated using several other indicative inputs. The interest rate used in this calculation is an arbitrary 13.99%, however exact interest rates vary per lender. The term of the loan used in this calculation is 60 month. Exact terms available vary per lender although options typically include 6, 12, 18, 24, 36, 48 and 60 months. This calculation also includes two typical mandatory fees charged by lenders. These are an account admin fee of \$10.00 per month (other payment frequencies may be available) and a one-off establishment fee of \$495.00. Typically, this fee can be paid upfront or, as in this calculation, be capitalised over the contract term, ie. included in the loan amount. These fees can vary per lender and other non-mandatory fees and charges may also apply. The total amount of repayments has been calculated by multiplying 260 weekly repayments (based on a 60 month term) by the weekly repayment amount of \$45.25 which equals \$13,639.56. This calculator does not consider any of your own personal circumstances and we strongly suggest you seek budgeting advice prior to committing to any loan contract. Responsible lending criteria and lender terms and conditions will likely apply to any finalised loan contract. Proof of security and/or vehicle insurance may also be required before proceeding.