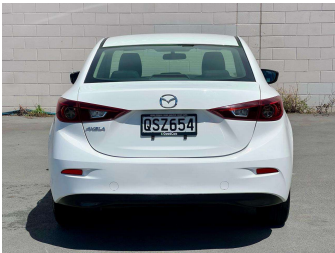


2015 Mazda AXELA 1.6ltr Automatic



Purchase Price

\$10,980

Includes GST

Excludes on-road costs of \$399

Indicative repayments

\$51.99 per week*

Based on a 60 month term & 20% deposit.

Total repayments (260) = \$15,792.81

Gain peace of mind with Mechanical Breakdown Insurance. Ask us how.

Top features

» Alloy Wheels

» Cam Chain

Body Style

4 door, Sedan

Odometer

105,584 km

Engine

1600 cc

Fuel Type

Petrol

Transmission

Auto

Wheels

Alloy Wheels


VIN

7AT0C13JX23102342

Interior

Black

Safety



Based on 2023 UCSR rating for 13-19 models

Reg No.

QSZ654

Ext Colour

White

History

-

Seats

5 seats

CO2 Emissions

★ ★ ★ ★ ☆ ☆
197 grams/km

Energy Economy

★ ★ ☆ ☆ ☆ ☆
Annual fuel cost of \$3,210
8.2L per 100km

Cost per year is an estimate based on petrol price of \$2.80 per litre and an average distance of 14000 km. Emissions and Energy Economy figures standardised to 3P WLTP.

Stock ID: 6785